

WALA

Wabita Area Library Association



**A message from our
President:
Jessica Pierpoint
New Year, New
Opportunities**

Hello WALA Readers!

We are starting off 2023 strong this year with a full list of spring networking, learning, and leadership opportunities!

First, we welcome everyone in March to come see the new updates to Evergreen Public Library in our Library Tour event. Moving forward to April, we will be bringing back our Tanner Spring Symposium in person at Derby Public Library. All who come will get to hear from a panel of librarians discussing the important topic of "Outreach in Libraries." Then to finish off the year in May, we welcome all paid members and potential new members to our Annual Meeting Luncheon at Friends University. We will have a guest author and vote for the new 2023-2024 leadership board.

Wondering if WALA is right for you, please reach out to either me or others on the board to find out how to make the most of your membership today! With many events and positions becoming more available this is the perfect time to find your fit with us and get more involved.



Find us on Facebook!

Don't keep WALA the best-kept secret in Kansas library land! Like us on Facebook and invite your friends to do the same.

We are always happy to post events or job openings at WALA libraries - just send a link to

Jessica Pierpoint:

jessica.pierpoint@wichita.edu

Upcoming WALA Events

- Spring Library Tour, p. 3
- Tanner Spring Symposium, p. 4
- Annual Meeting, p. 5

WALA 2022 Leadership

Officers

<p>President 2022-2023 Jessica Pierpoint WSU Library 316-978-5074 jessica.pierpoint@wichita.edu</p>	<p>Vice President/ President Elect Vacant</p>	<p>Past President 2021-2022 April Hernandez Goddard Public Library 316- 794-8771 director@goddardlibrary.com</p>	<p>Webmaster 2015- Samuel Willis WSU Libraries 316-978- 5104 samuel.willis@wichita.edu</p>
<p>Treasurer 2022-2024 Anne Ethen Wichita Public Library 316-303-8181 aethen@wichita.gov</p>	<p>Secretary 2022-2024 Julie Mills 253-509-2391 julieannalynnmills@gmail.com</p>	<p>Newsletter Editors 2022- Kathie Buckman Loree Hisken Heather Powell Julie Mills</p>	<p>Ex Officio 2016- Nicole Penley SCKLS 1-800-234-0529 ext. 133 nicole@sckls.info</p>

Board of Directors

<p>2021-2023 Loree Hisken Belle Plaine Elementary School lhisken@usd357.org</p>	<p>2021-2023 Britten Kuckelman https://www.linkedin.com/in/britkuckel/</p>	<p>2022-2023 Heather Powell Friends University 316-295-5521 heather_powell@friends.edu</p>	<p>2022-2023 Cina Shirley Douglass Public Library 316-746-2600 doughb@sbcglobal.net</p>
<p>2022-2024 Kathie Buckman Emporia State University 620-757-9088 kbuckman@emporia.edu</p>	<p>2022-2024 Samuel Willis WSU Libraries 316-978-5104 samuel.willis@wichita.edu</p>	<p>2022-2024 Jeannie Booth Friends University 316-295-5603 jeannie_booth@friends.edu</p>	



Library Tour

Join us for a tour of the newly updated
Evergreen Community Center & Library!

Monday, March 6th, 2023 at 5 :30pm

Board meeting to follow at 6:00 pm
and dinner afterwards!



2601 N Arkansas Ave
Wichita, KS 67204



Tanner Spring Symposium

"Outreach in Libraries"



Panelists:

April Hernandez: Former Director of Goddard
Public Library;

Systems Consultant, Southeast Kansas Library System

Dr. Bobbie Long: Assistant Professor, School of
Library and Information Management, Emporia
State University

Alex Mosakowski, Assistant Professor, William
Allen White Library, Emporia State University

Tuesday, April 25th, 2023, 1-4 pm

Derby Public Library

1600 E. Walnut Grove, Derby, KS

Join us in person this year for a discussion on
Outreach in Libraries!

SAVE THE DATE

Volume 29, No. 2, Spring 2023

WAKA Annual Meeting

Join us for:

- Author Michael D. Graves
(Bio next page)
- Vote for 23-24 board
- President's recap
- Lunch

Wednesday, May 17th, 2023 11:30-1:30pm

Friends University
2100 W. University Ave.
Wichita, Ks

**Be on the look out for RSVP and
lunch pricing**

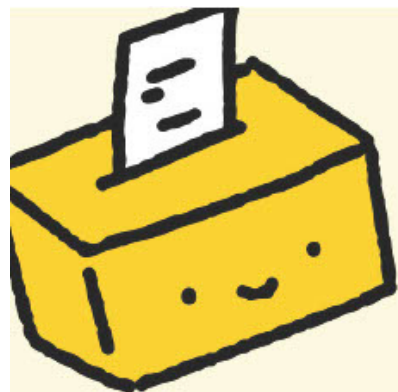


Michael D. Graves

Pete Stone, Private Investigator

When the Great Depression hit Wichita, Pete Stone lost his dairy business in a coin toss and his marriage soon after. Always a loner and reluctant to take orders, he begins his career as a private investigator. With a heart of gold and determination to follow his gut when the clues don't pan out, Pete never stops until the bad guy is caught.

Michael D. Graves created the character of Pete Stone as a memorial to his grandfather. Set in historically accurate 1930s Wichita, Kansas, the series is appropriate for middle school through adult audiences.



WALA is Looking for Leaders!

23-24 Leadership Opportunities:

- **Vice-President/President Elect/Past President**
(This is a 3-year term)
- **Four Board Members**
(These are 2-year terms)

WALA meets on the first Monday, September through May, at 11:30 at Watermark Books. We also offer a Zoom option, for those unable to attend in person.

If you are interested in throwing your hat into the WALA ring, or have questions, please contact President Jessica Pierpoint:

Jessica.pierpoint@wichita.edu

The election will take place at our Annual Meeting on Wednesday, May 17th.




HOLIDAY Party



Volume 29, No. 2, Spring 2023

WALA Holiday Party 2022 was held at The Alley on Thursday, December 15 from 5:30-8:30 pm. We had a few bowling lanes, a white elephant gift exchange, and merry festivities had by all.



		
Barber	Butler	Cowley
		
Harper	Harvey	Kingman
		
McPherson	Reno	Rice
		
Sedgwick	Stafford	Sumner

South Central Kansas Library System

sckls.info

Serving public, school, academic and special libraries in 12 counties since 1967

How have you shown your library *Love*?

February is Library Lovers Month. Whether is a school library, public library, academic library, or a special collection library- we are wild about libraries. As librarians, we strive for creating a space that is for everyone. How have you shown your library some love? How can we foster future growth in libraries? Check out ways to be a library advocate and support at <http://love.mykansaslibrary.org/>

I LOVE MY
KANSAS
LIBRARY 

Do you know a library staff member who would enjoy the social interaction and networking opportunities that WALA offers? Do you have a coworker who could contribute to our local organization? Do you have an employee who has great ideas and loves to be involved with the community? If so, encourage them to become a member of the Wichita Area Library Association!

For \$15.00 a year, membership for WALA is a steal! All they need to do is fill out a membership application and mail it and a check for \$15.00 (made payable to WALA) to

Anne Ethen, WALA Treasurer
Wichita Public Library
Evergreen Branch
2601 N. Arkansas
Wichita, KS 67204

Membership forms can be found on our website:
<https://walaks.org/membership/>

The Wichita Area Library Association (WALA) is an organization of library professionals established in 1982 in Wichita, Kansas.

WALA is dedicated to supporting libraries and library employees in the Wichita area and works to improve library services and access for library users in the Wichita community.

Submit materials for WALA News to: Kathie Buckman, kbuckman@emporia.edu